



**REPORT TO BOARD OF TRUSTEES**  
**SUPERINTENDENT/PRESIDENT – KEVIN TRUTNA, ED.D.**  
**MAY 19, 2016**

**1. STUDENT AND EMPLOYEE ACHIEVEMENTS**

Softball finished the season as co-champions of the Golden Valley Conference and advanced to the playoffs where they lost to Cosumnes River College. Several FRC student-athletes were recognized for their on-the-field accomplishments and **Coach Meredith Aragon** says that this group of students is the most cohesive team that she has ever coached. They will be missed at FRC.

**First Team All-GVC Softball**

Danielle Ortiz - outfield  
Kaitlyn Folkers - infield  
Kerrigan Travens - catcher  
Morgan Greene - utility

**Second Team All-GVC Softball**

Annie Enos - infield  
Cristal Perez - infield

**Coach Sarah Ritchie** and the FRC Sand Volleyball team tied for second in conference and both the team and individuals qualified for CCCAA NorCal Playoffs. Two individual teams, **Morgan Hughes/Nina Holmes** were ranked 5<sup>th</sup> and **Stacey Witt/Jessica Martinez** ended up 6<sup>th</sup> in NorCal. Both of these teams qualified for the state championships in San Diego, where Morgan Hughes and Nina Holmes beat the number one-ranked individual team before falling in the CCCAA Championships to finish #8 in the state.

Baseball finished the season with a record of 24-13 and earned 2<sup>nd</sup> place in the GVC, overcoming multiple injuries and obstacles all season long before falling in the playoffs at Reedley College. **Coach Terry Baumgartner** is pleased to announce the following baseball post-season awards.

**First Team All-GVC Baseball**

Brandon Vial – Pitcher  
Keola Lutz – Infield  
Daniel Fentriss – Infield  
Kila Zuttermeister – Outfield

**Academic All-Conference**

Jose Melendez – Pitcher  
Brad Galisatus – Pitcher  
Jace Zampirro - Pitcher  
Kama Eldredge – Catcher  
J.C. Montemayor – Catcher  
Mikey Rita – Infield  
Peter Shearer – Outfield  
Rex Campbell – Outfield

**Second Team All-GVC Baseball**

Keoki Planas – Pitcher  
Brad Galisatus – Pitcher  
Kama Eldredge – Catcher  
Mikey Rita – Infield  
Peter Shearer – Outfield

**Academic All-State**

Jose Melendez - Pitcher  
J.C. Montemayor - Catcher  
Peter Shearer – Outfield

**Kelli Anthis** reports that the Plumas County Business Summit was a huge success. There were 117 individuals in attendance, with 20 students, 90 business community members, and 7 students. The comments provided 98% positive feedback, while the remaining 2% commented on the “fan noise” in the main room.

FRC is proud of the athletic accomplishments, the academic awards, and the scholarships that our student-athletes earn to continue their education. Below is a report of some of the athletic scholarships and transfers that have occurred this year, with reports of spring sport athletes still taking official campus visits before deciding upon a scholarship offer.

### **Baseball**

Brad Galisatus – CSU East Bay

### **Men’s Soccer**

Dominic Docherty – Lynn University  
Gavin Gillies – University Of West Florida  
Jonathan Tukala – John Brown University  
Jacob Farthing – Mississippi College  
Jacob Price – Point University  
Petter Knoph – Cal Lutheran University  
Dylan Murray – Texas A&M-Texarkana  
Zak McCarthy – Texas A&M-Texarkana  
Ashley Walker - Texas A&M-Texarkana

### **Volleyball**

Justine Cota - Lewis & Clark State College  
Mariah Diaz - University of Great Falls  
Alexia Southern - Southern Arkansas University  
Bailey Zavala - Chowan University  
Nina Holmes - University of Albany SUNY

### **Softball**

Morgan Greene - La Sierra University  
Torri Parman - New Mexico Highlands University  
Cristal Perez – CSU San Bernardino  
Sydney Womer - New Mexico Highlands University  
Danielle Ortiz - Fort Lewis University

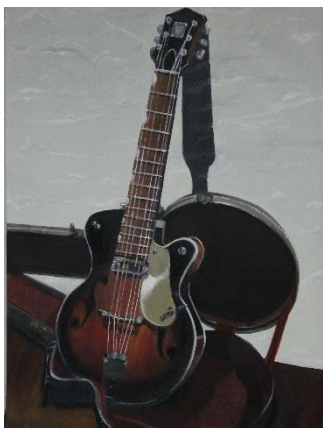
### **Women’s Soccer**

Danielle Smith – New Mexico State  
Megan Stow – Barry University  
Hannah Fenn – Louisiana Tech University  
Isabella Wilson – Point Park University  
Aubree Hayes – Union College, KY  
Darryn Hlabangana – Wayland Baptist University  
Jourdan Correia – Louisiana State University-Alexandria  
Matilda Bylund – Southeastern Louisiana State University  
Mercedes Perez – Missouri Southern State University  
Megan Hellmuth – West Liberty University  
Samantha Buchannan – Georgia Gwinnett University  
Serena Melendrez – Eastern New Mexico University

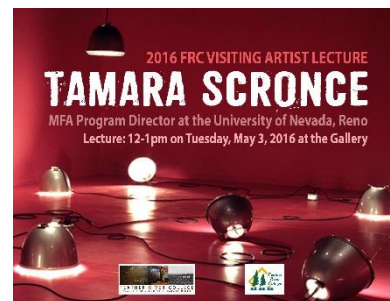
### **Football**

Tarik Ballard - University of Alabama Birmingham  
Connor Kaegi - University of Montana  
Drake White - Weber State  
TJ Menning - UNLV  
CJ Hicks - North Carolina Central  
BJ Wilhelme-Ioane - Black Hills State University  
Connor Killeen - Chowan University  
Dorian Cowart - South Dakota School of Mines  
Tonio Burton - Chowan University  
Dimitri Butts - South Dakota State University  
Aaron Brown - Lincoln University  
Darren Cantone - Chowan University  
Javon Washington - Quincy University  
Isadore Wood - Warner University  
Ulysses Cannon - Cincinnati Christian University  
Jase Ryals - Montana State University-Northern

The Art program had several accomplishments in the past few weeks. The 2016 FRC Visiting Artist and Curator, **Tamara Scronce**, MFA Program Director at UNR came to give a talk on May 3<sup>rd</sup> and also to curate the student exhibition.



The Student Art Exhibition opened on May 6<sup>th</sup> at Plumas Arts and Plumas County Museum. Six students were awarded with a Juror's Award (\$80 gift card each in art supplies thanks to the FRC Foundation mini-grant). The winners were: **Nancy Frady, Matthew Anderson, Ayla Coral, Brigahne Turner, Jordan Whitchurch and Jewel Castillo**. Some of the student work is pictured to the left.



Also, FRC student **Kayla Kelton's** logo was the winner for the Feather River Stewardship Coalition logo contest last semester. Besides winning the competition, Kayla received an award and a gift card for art supplies.

The Early Childhood Education (ECE) and Elementary Teacher Education (ETE) Programs received funding this semester from the Adult Education Block Grant for the Go Teach Project. The grant enabled FRC to provide paid coaching for students who were enrolled in ECE laboratory classes with the intent to increase the skills and employability of students and to assist them in defining clear career pathways. The coaching occurred at the FRC Child Development Center, Quincy Head Start, Chester Mountain Methodist Preschool and five Plumas County elementary school sites. The preliminary outcomes are very favorable and will be shared after the grant comes to a close. **Shelley Miller** is the Project Coordinator and coordinator for ECE and **Tracee Dunmore** for the ETE portion of the grant.

**Rajinder Gill** writes that The White House sent out a press release on March 9<sup>th</sup> for the Federal TechHire initiative. As part of the grant activities, various partners committed to supporting TechHire awardees. The White House release outlined the project: *New Commitments from Private Sector to Support Expanded Access to Technology Training for Under-Served Populations*. The National Association for Community College Entrepreneurship (NACCE) and the California Community College's Doing What MATTERS for Jobs and Economy initiative commits to provide New World of Work 21st Century Employability Skills training to 20 TechHire communities including access to coaching and materials to implement and strengthen workplace learning programs. [www.whitehouse.gov/the-press-office/2016/03/09/fact-sheet-white-house-announces-doubling-techhire-communities-and-new](http://www.whitehouse.gov/the-press-office/2016/03/09/fact-sheet-white-house-announces-doubling-techhire-communities-and-new)

**Elisa Adler** reports that her second book, *Home Place - A Collection of Oral Histories of Genesee Valley*, has been published and is available, including the FRC Library. She has also received the advanced training in the Quaker Alternatives to Violence Program (AVP) that leads workshops in communities and prisons. This training is related to working with populations particularly vulnerable to violence and is beneficial to her ISP teaching. She hopes to offer an AVP workshop at FRC in the future.

---

## 2. SUPERINTENDENT/PRESIDENT PREVIOUS MONTH'S ACTIVITIES REPRESENTING FRCCD

- a) April 25 – Day in the Mountains welcome
- b) April 25 – attended sand volleyball game vs. Chico State
- c) April 27 – Quincy Chamber of Commerce Executive Board meeting
- d) April 28 – attended baseball game vs. College of Siskiyous
- e) May 4 – meeting with **Trustee Jim Meyers**, Graeagle
- f) May 9 – Quincy Rotary meeting
- g) May 10 – meeting with **Trustee Guy McNett**, Greenville
- h) May 11 – Alliance for Workforce Development “State of the Workforce” meeting, Quincy
- i) May 11 – Foundation BMC meeting
- j) May 12 – meeting with **Brian Doyle**, CFT representative
- k) May 12 – Quincy Star Follies film presentation
- l) May 13 – Lost Sierra Workgroup meeting
- m) May 13 – meeting with **Trustees Bill Elliot** and **John Sheehan**
- n) May 16 – **Glenda Humiston** meeting, VP University of California Agriculture & Natural Resources
- o) May 18 – Economic Development and Business Development Workshop, Sierraville
- p) May 19 – Economic Development Round Table meeting with **Supervisor Sherrie Thrall**, Quincy

---

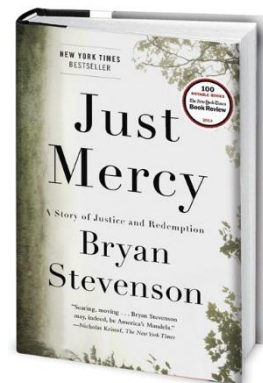
## 3. FRC CHOOSES *JUST MERCY* AS BOOK IN COMMON

*Just Mercy: A Story of Justice and Redemption* by **Bryan Stevenson** was chosen for the 2016-17 FRC Book in Common project. Under the leadership of **Dr. Chris Connell** and several faculty members, *Just Mercy* was chosen to compliment the curriculum from several courses. Look for lectures, presentations, and activities next year to integrate this book into several FRC classes.

“A powerful true story about the potential for mercy to redeem us, and a clarion call to fix our broken system of justice—from one of the most brilliant and influential lawyers of our time.

Bryan Stevenson was a young lawyer when he founded the Equal Justice Initiative, a legal practice dedicated to defending those most desperate and in need: the poor, the wrongly condemned, and women and children trapped in the farthest reaches of our criminal justice system. One of his first cases was that of Walter McMillian, a young man who was sentenced to die for a notorious murder he insisted he didn’t commit. The case drew Bryan into a tangle of conspiracy, political machination, and legal brinkmanship, and transformed his understanding of mercy and justice forever.

*Just Mercy* is at once an unforgettable account of an idealistic, gifted young lawyer’s coming of age, a moving window into the lives of those he has defended, and an inspiring argument for compassion in the pursuit of true justice.”



#### 4. CALIFORNIA SMALL COLLEGE SCORECARD COMPARISON

The following Chancellor Office Scorecard information was recently shared among the smallest eight college districts in California. It demonstrates the need for enrollment management and the fact that given the small populations, large changes often result due to a small change from just a few students.

Small 8 California Community College Scorecard Comparisons (2014-2015)

Scorecard Data Element	Statewide	Small 8 Colleges								
		LTCC	Barstow	Copper Mtn.	Feather River	Lassen	Mendocino	Palo Verde	Siskiyou	Median
<b>Student Demographics</b>										
Student Headcount	2,317,945	5,918	4,349	2,516	3,094	4,703	6,480	5,554	5,360	5,032
<b>Gender</b>										
Male	45.8%	53.1%	40.4%	40.7%	52.5%	76.4%	39.7%	73.5%	52.6%	52.6%
Female	53.1%	46.1%	58.6%	59.0%	47.0%	23.5%	60.2%	26.2%	43.9%	46.6%
<b>Age</b>										
24 and under	57.1%	33.4%	52.2%	55.5%	46.9%	31.1%	53.1%	17.4%	30.4%	40.2%
40 and over	16.1%	36.3%	14.0%	15.1%	19.8%	29.3%	22.1%	44.4%	32.6%	25.7%
<b>Race/Ethnicity</b>										
African American	6.7%	2.2%	15.5%	5.4%	9.7%	14.8%	2.6%	9.7%	3.4%	7.6%
American Indian/Alaska Native	0.4%	0.4%	0.7%	1.0%	2.3%	2.1%	5.1%	1.0%	1.6%	1.3%
Asian	11.4%	3.3%	1.9%	2.4%	2.5%	2.7%	2.7%	3.3%	3.5%	2.7%
Filipino	2.9%	1.6%	1.4%	1.4%	0.6%	0.3%	1.0%	1.9%	1.5%	1.4%
Hispanic	41.7%	22.2%	38.7%	27.8%	28.8%	28.2%	30.8%	38.0%	29.0%	28.9%
Pacific Islander	0.4%	0.3%	1.0%	0.5%	0.8%	1.0%	0.6%	0.6%	0.5%	0.6%
White	28.2%	62.3%	32.7%	54.0%	48.5%	44.0%	55.4%	39.1%	45.0%	46.8%
Two or more Races	3.7%	3.5%	5.2%	5.6%	0.2%	2.5%	0.9%	1.9%	3.2%	2.9%
Unknown	4.5%	4.3%	2.8%	1.9%	6.7%	440.0%	0.9%	4.5%	12.3%	4.4%
<b>Other</b>										
FTES	1,133,287.1	1,761.3	2,582.2	1,423.8	1,610.8	1,747.0	3,045.9	1,844.6	2,541.1	1,803.0
Full-Time Faculty	56.1%	39.4%	46.9%	30.8%	60.9%	60.4%	36.7%	77.0%	43.7%	45.3%
Median Credit Section Size	26	13	15	20	16	17	14	18	15	16
First-Generation Students	41.7%	25.3%	n/a	41.8%	n/a	46.3%	33.4%	55.1%	3.0%	37.6%
Student to Counselor Ratio	657:1	1,049:1	978:1	355:1	1,633:0	349:1	341:1	2,087:1	1,191:1	1,014:1
<b>Student Success</b>										
<b>Remedial</b>										
Math	32.7%	43.6%	30.2%	27.3%	23.1%	15.9%	29.4%	19.5%	25.7%	26.5%
English	45.4%	37.7%	35.8%	34.7%	31.8%	21.2%	37.7%	23.8%	29.6%	33.3%
ESL	28.6%	n/a	n/a	n/a	n/a	n/a	39.0%	0.0%	25.0%	25.0%
<b>Persistence</b>										
College Prepared	75.1%	40.5%	50.7%	55.3%	80.9%	54.2%	52.6%	51.4%	70.2%	53.4%
Unprepared	72.9%	60.1%	52.7%	56.6%	53.8%	54.2%	55.7%	58.4%	67.7%	56.2%
Overall	73.4%	55.7%	52.5%	56.4%	63.7%	54.2%	55.2%	57.4%	68.6%	56.1%
<b>30 Units</b>										
College Prepared	73.2%	50.0%	43.3%	52.6%	76.4%	70.8%	63.2%	51.4%	59.5%	56.1%
Unprepared	65.8%	62.2%	48.0%	46.8%	61.5%	44.4%	56.5%	53.4%	57.7%	55.0%
Overall	67.6%	59.5%	47.5%	47.8%	66.9%	46.4%	57.6%	53.1%	58.4%	55.4%
<b>Completion</b>										
College Prepared	70.0%	40.5%	56.7%	44.7%	77.5%	58.3%	61.8%	40.5%	58.7%	57.5%
Unprepared	39.6%	39.9%	29.5%	21.4%	34.0%	20.9%	26.8%	26.7%	33.6%	28.2%
Overall	47.1%	40.0%	32.4%	25.3%	49.8%	23.6%	32.7%	28.7%	42.5%	32.6%
CTE	51.4%	36.2%	43.5%	54.5%	45.5%	42.2%	46.5%	39.5%	53.2%	44.5%
Skillsbuilder	13.4%	3.5%	13.1%	12.5%	16.1%	2.4%	15.6%	7.5%	19.3%	12.8%



---

## 5. EARTH DAY AND FRC TRASH AUDIT

In honor of Earth Day, many students, faculty and staff from around campus worked hard to make FRC a cleaner and more environmentally friendly place by participating in two trash-related events.

Students from Introduction to Environmental Studies and Introduction to Environmental Science performed a trash audit by sorting through the trash from the dumpsters in upper campus. They found:

Category	2016 Audit Results	2013 Audit Results (for comparison)
True Trash	31%	42%
Recycling	28%	25%
Compost*	39%	22%
E-Waste	2%	9%
Hazmat	0%	2%

\*Quincy does not have a system for compost pick-up.

**Bridget Tracy** reports that Students from across campus (with a special shout out to Introduction to Environmental Science and Introduction to Sociology) collected 255 pounds of trash from across campus in 30 minutes as part of our annual Earth Day Trash Clean Up. Thanks again to everyone who helped out and a special thanks to the Facilities Committee for making this event happen as well as to all the local businesses, which donated prizes to the trash cleanup effort (Eagles' Perch, Pangaea, Downtown Barber Shop, Little People Toy Store, Safeway, Quincy Co-op, and Student Environmental Association).



---

## 6. UPWARD BOUND ACTIVITIES

**Audrey Peters** is pleased to report that Upward Bound took ten participating high school students to tour Butte College on May 7<sup>th</sup>. The tour guide - who is an Upward Bound Portola high alumna slated to graduate from Butte College this spring - did a fabulous job of sharing her experience at Butte College.

The Upward Bound 2016 graduating cohort of students will be attending the following colleges in fall:

- Feather River College (3)
- Butte College (3)
- Cabrillo Community College (2)
- UC Davis (1)
- South Dakota State University (1)
- Southern Oregon University (1)

An Upward Bound's Greenville high alumna is graduating from FRC with honors this spring and transferring to Chico State.

Upward Bound has an incredible six week summer program schedule that includes:

- A three-day Leadership kick-off at Camp Connery on the southern tip of Lake Almanor
- Four weeks of instruction in mathematics, science, language arts, Spanish, and College Life Skills on the FRC campus
- A four-day out-of-area college tour including UC Berkeley, San Francisco State, St. Mary's and Napa Valley College

FRC is in the process of collecting data and letters of commitment from schools and community organizations for the purposes of writing a proposal for the next five-year cycle of funding to support the Upward Bound program.



Upward Bound participants Maddison (PHS), Cerena (PHS) and Hailey (GHS) explore Butte College's "Secret Garden"

Upward Bound participants from Chester, Quincy and Portola admire the Koi pond in the center of the Butte College campus



---

## 7. PHI THETA KAPPA YEAR IN REVIEW AND PREVIEW OF 2016-17

**Dr. Katie Desmond** has been very busy providing great leadership to Phi Theta Kappa. There were many statewide and regional awards for this year. **Kelly Williamson** is recipient of the Alpha Psi Zeta transfer scholarship. This scholarship was funded by many generous donors to whom our chapter is very grateful. The intention is for this to be an annual scholarship for one of our members based on academic accomplishment and service in the chapter. *Contributions to this scholarship may be made to the Alpha Psi Zeta transfer scholarship via check, c/o Katie Desmond.*

The 2015-2016 officers have been phenomenal. They have moved this chapter forward in so many ways and established solid foundations for the incoming officers and members. These officers deserve acknowledgment and the college's appreciation:

President: Kelly Williamson  
Vice President: Will Anderson  
Vice President of Membership: Cara Robinette  
Secretary: Brianna Ely  
Treasurer: Mary Alice Thurber  
Fundraising: Morgan Greene

Alpha Psi Zeta has elected new officers for the 2016-2017 year:

President: Matt Dougan  
Vice President: Teagen Reyer  
Vice President of Membership: Chris Clements  
Secretary: Bethany Hammons  
Treasurer: Alaya Haney  
Social Media Representative: Jamie Johnson  
Fundraising: Ashley Young & Summer Vercuysen

**Congratulations  
to all 2016  
Eagle Graduates!**

And finally, there are 57 Alpha Psi Zeta graduates this year! Kudos on your hard work and well-deserved rewards.

---

## 8. ON THE HORIZON

With the additional property currently in escrow, the next step is to develop an augmentation to the FRC Facilities Master Plan that includes this new space. Stakeholders will help create the overall plan for the 180 acre addition to campus. Due to regulations, the main purpose must be laboratories and outdoor activities, not school buildings (meaning actual physical classrooms) on the grounds. If you are interested in participating, please contact Nick Boyd as architects will hold a preliminary round of meetings this summer for final approval of the Facilities Master Plan addition sometime in the fall semester.